

CHECK VALVE

Power Plant Check Valve

REF **EFC-514** ISSUED 07 Jul 2026

SPECIFICATIONS

Size	DN50 to DN600
Pressure	Class 600 to Class 2500
End connection	butt weld (GB/T 12224 / NB/T 47044) / flanged (GB/T 9113 / ASME B16.5)
Face-to-face	GB/T 12221, NB/T 47044
Temperature	-29°C to 650°C

ACTUATION

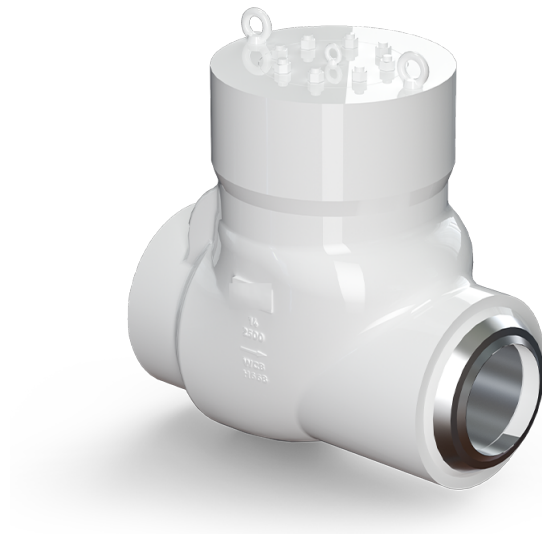
- Manual
- Pneumatic
- Electric

STANDARDS

Design	GB/T 12224, ASME B16.34, NB/T 47044
Test	GB/T 26480

APPLICATIONS

- High-temperature and high-pressure thermal power plants
- Power generation industry
- Petroleum refining



Install, operate and maintain in accordance with the manufacturer's manual supplied with the product.

MATERIALS

Body **Carbon steel, Stainless steel, Alloy steel**

FEATURES

- Low fluid resistance due to straight-through internal medium passage
- Flow direction does not change through the valve
- Pressure self-tightening seal
- Butt-welded end connections as standard
- Rapid valve disc closure resulting in low water hammer pressure
- Simple body structure
- Good sealing performance
- Sealing surface subject to minimal erosion when fully open

OPTIONS & NOTES

- Nominal size also expressed as NPS 2~NPS 24
- Pressure rating also expressed as PN100~PN420
- Operator options listed as 'Manual, Pneumatic, Electric, etc.'