

CHECK VALVE

Slow-closing Check Valve

REF EFC-500 ISSUED 06 Jul 2026

SPECIFICATIONS

Size	DN15 to DN400
Pressure	PN16 to PN420
End connection	flanged (GB/T9113) / flanged (ASME B16.5) / butt weld (ASME B16.25) / butt weld (GB/T12224)
Face-to-face	GB/T12221, ASME B16.10
Temperature	-29°C to 538°C
Media	water, oil, gas

STANDARDS

Design	GB/T12235, API 594
Test	GB/T13927, API 598

APPLICATIONS

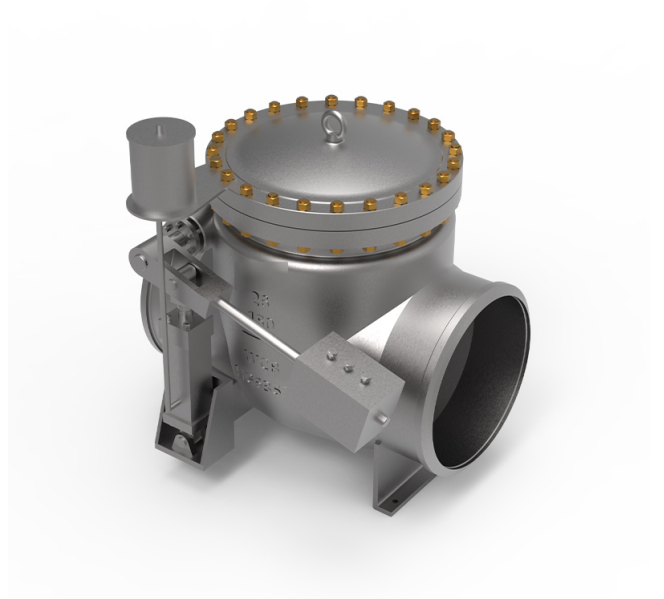
- water supply pipelines
- oil pipelines
- gas pipelines
- pump protection systems
- auxiliary pressure supply systems

MATERIALS

Body	Carbon Steel, Stainless Steel, Alloy Steel
------	--------------------------------------------

FEATURES

- Automatic disc opening and closing actuated by medium pressure without external control
- Slow-closing design reduces impact sound and water hammer effect
- Prevents backflow of medium and reverse rotation of pumps and drive motors
- Suitable for pipelines where auxiliary system pressure may rise above system pressure
- Compact structure



Install, operate and maintain in accordance with the manufacturer's manual supplied with the product.