

GATE VALVE

Non-Rising Stem Gate Valve

REF **EFC-495** ISSUED 06 Jul 2026

SPECIFICATIONS

Size	NPS2 to NPS24
Pressure	Class 600 / PN100 to Class 2500 / PN420
Temperature	-29°C to 540°C
Media	High-temperature high-pressure working media, Toxic and hazardous liquids, General process fluids

ACTUATION

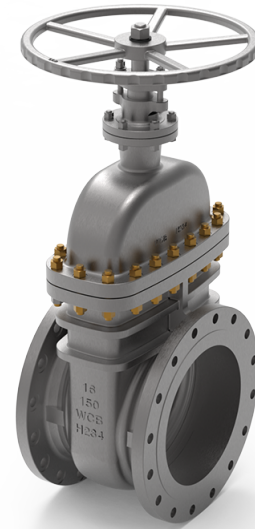
- Handwheel (manual)

STANDARDS

Design	API 600, API 603, ASME B16.34
--------	--------------------------------------

APPLICATIONS

- Power industry
- Petroleum refining
- Petrochemical industry
- Marine oil
- Tap water engineering / urban construction
- Chemical industry



Install, operate and maintain in accordance with the manufacturer's manual supplied with the product.

MATERIALS

Body **Carbon Steel, Stainless Steel, Alloy Steel**

FEATURES

- Stem and nut arranged on the gate plate; stem rotates but does not rise outside the valve
- Trapezoidal thread at base of stem converts rotary motion to linear gate travel
- Guide mechanism in valve body prevents gate rotation during opening and closing
- Wedge gate does not contact seat surface prior to final closure, reducing seat wear
- Low fluid resistance; straight-through internal flow path with no change in flow direction
- Low opening and closing torque
- Bidirectional flow installation
- Reduced risk of water hammer
- Full bore opening when gate height equals valve bore diameter
- Valve stem apex used as full-open position indicator

OPTIONS & NOTES

- At full open position, the open state cannot be monitored during operation; stem vertex is used as full-open indicator
- Main materials listed as 'Carbon Steel, Stainless Steel, Alloy Steel, Etc.' — additional materials available on request