

CRYOGENIC CHECK VALVE

Cryogenic Lifting Check Valve

REF **EFC-488** ISSUED 06 Jul 2026

SPECIFICATIONS

Size	NPS 1 to NPS 24
Pressure	Class 150 / PN10 to Class 2500 / PN420
Temperature	-196°C to 150°C
Media	LNG, LPG, Liquid oxygen, Natural gas, Oil, Gas

ACTUATION

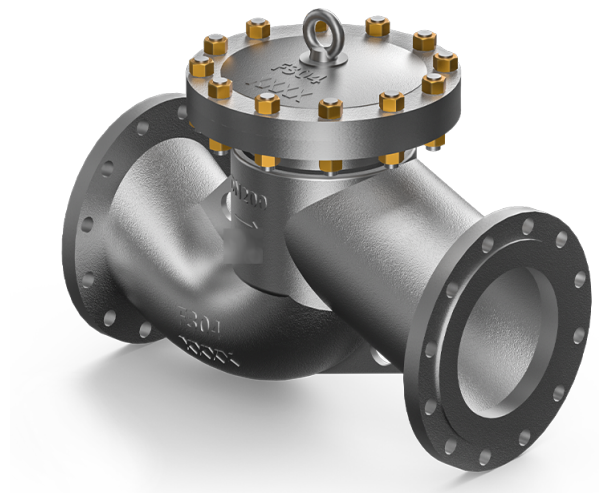
- Self-acting (automatic via pressure differential)
- Manual
- Pneumatic
- Electric

STANDARDS

Design	BS 6364, API 6D
--------	------------------------

APPLICATIONS

- LNG storage and transportation
- Air separation equipment
- Petrochemical industry
- Long-distance oil and gas pipelines
- Cryogenic chemical systems



Install, operate and maintain in accordance with the manufacturer's manual supplied with the product.

MATERIALS

Body	Stainless Steel	Sealing surface	Cobalt-based alloy
------	------------------------	-----------------	---------------------------

FEATURES

- Vertical lifting disc structure; disc slides along body vertical centreline
- Automatic open/close based on medium pressure differential; no external power required
- Cobalt-based alloy sealing surface for reliable sealing under cryogenic conditions
- Compact structure suitable for horizontal pipeline installation
- Maintains flexible operation at temperatures as low as -196 °C
- Can be equipped with safety valves and leakage valves
- Supports manual, pneumatic, or electric operation in addition to self-acting mode

OPTIONS & NOTES

- Sizes marked with * (NPS 1/2*, NPS 24*) — exact scope of asterisk notation not explained on page
- Technical Specification available as download (content not disclosed on page)
- Operator options listed as 'Manual, Pneumatic, Electric, etc...' — further variants on request