

CONTROL VALVE

# C700 Series Bellow-sealed Control Valve

REF **EFC-470** ISSUED 06 Jul 2026

## SPECIFICATIONS

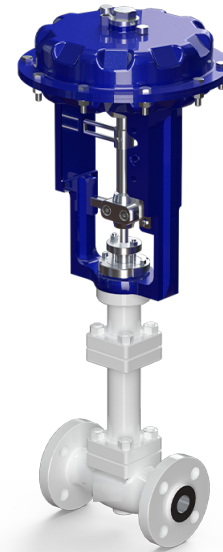
Size	<b>DN15 to DN300</b>
Temperature	<b>-45°C to 350°C</b>
Media	<b>Highly toxic media, Strongly corrosive media, Radioactive media, Rare and precious media</b>

## ACTUATION

- Pneumatic — RSMF series multi-spring pneumatic diaphragm actuator
- Electric

## APPLICATIONS

- Petroleum industry automatic control systems
- Chemical engineering automatic control systems
- Metallurgy automatic control systems
- Handling of highly toxic, strongly corrosive, radioactive, and rare precious media



Install, operate and maintain in accordance with the manufacturer's manual supplied with the product.

## MATERIALS

---

Body **WCB, CF8, CF8M, CF3, CF3M**

---

## FEATURES

---

- Metal bellows used as the dynamic sealing element, replacing traditional packing seal
- Bellows completely isolates valve stem from medium, preventing leakage through valve stem outer surface
- Metal bellows capable of withstanding high pressure with stable sealing performance
- No packing friction; low valve stem movement resistance, improving adjustment accuracy and response speed
- Eliminates risk of valve stem jamming caused by particle ingress or packing hardening
- S-flow channel passage in valve body for low pressure drop loss and high flow rate
- Wide adjustable ratio and high flow characteristic accuracy
- CSW701/CW701: top-guided single-seat structure
- CW702/CLW702: pressure-balanced cage-guided structure
- CLW702: additional sealing ring between valve core and valve cage for reduced leakage
- Compatible with RSMF series actuators for compact structure, large output force, and long service life

## OPTIONS & NOTES

---

- Operator options listed as pneumatic, electric, etc. — additional actuator types available on enquiry