

BALL VALVE

Top Entry Ball Valve

REF **EFC-449** ISSUED 06 Jul 2026

SPECIFICATIONS

| | |
|-------------|--|
| Size | NPS 2" to NPS 36" |
| Pressure | Class 150 to Class 2500 |
| Temperature | -60°C to 250°C |
| Media | petroleum, oil, gas, natural gas, chemical media, water |

ACTUATION

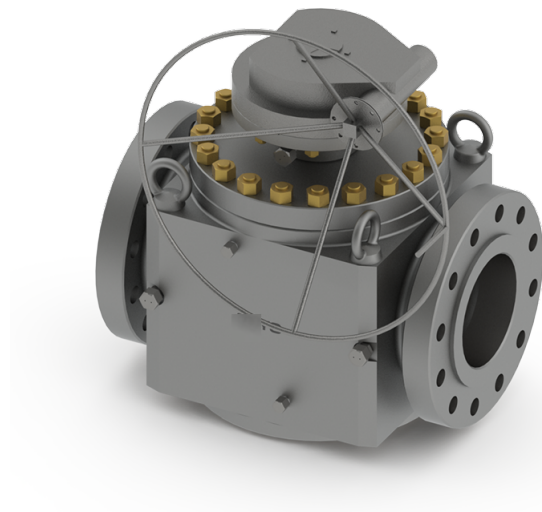
- Manual
- Pneumatic
- Electric

STANDARDS

| | |
|--------|--------------------------|
| Design | API 6D, ISO 17292 |
|--------|--------------------------|

APPLICATIONS

- Petroleum industry
- Chemical industry
- Metallurgy
- Light industry
- Power stations
- Urban construction water supply
- Low-temperature working conditions
- Long-distance oil and gas pipelines



Install, operate and maintain in accordance with the manufacturer's manual supplied with the product.

MATERIALS

Body **Carbon Steel, Stainless Steel, Alloy Steel**

FEATURES

- Top entry design allows in-line maintenance without pipe removal
- Floating seat provides sealing at all pressures
- Fire-safe components incorporated
- Built-in grease valve for emergency sealing and regular lubrication
- Customisable extended stem lengths for underground installations
- Anti-static construction compliant with API 6D and ISO 17292
- Dual block and bleed capability with automatic pressure relief
- Fixed ball with sliding bearings for low operating torque
- Automatic compensation design
- Double seal construction
- Vibration resistant

OPTIONS & NOTES

- Operator options listed as: Manual, Pneumatic, Electric, etc.
- Technical specification available as download (content not reproduced on page)