

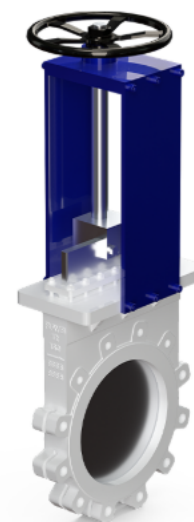
KNIFE GATE VALVE

Short Pattern Slab Gate Valve

REF **EFC-441** ISSUED 06 Jul 2026

SPECIFICATIONS

Size	DN50 to DN900
Pressure	PN3 to PN50
End connection	flanged (ASME B16.5) / flanged (ASME B16.47) / flanged (MSS SP-81) / butt weld (ASME B16.25) / clamp
Face-to-face	ASME B16.10, GB/T 12221, MSS SP-81
Temperature	-46°C to 200°C
Media	mud, pulp, urban sewage, sugar factory effluent, powder, paper industry media, pharmaceutical media, chemical industry media



ACTUATION

- Handwheel
- Umbrella Wheel
- Gearbox
- Electric actuator
- Pneumatic actuator
- Hydraulic actuator
- Electro-hydraulic actuator
- Chain wheel

STANDARDS

Design	MSS SP-81, JB/T 8691
Test	MSS SP-81, API 598

APPLICATIONS

- Mud and slurry handling
- Pulp processing
- Urban sewage treatment
- Sugar factory processes

Install, operate and maintain in accordance with the manufacturer's manual supplied with the product.

- Powder handling
- Paper industry
- Pharmaceutical industry
- Chemical industry

MATERIALS

Body **Carbon steel, Low-temperature carbon steel, Stainless steel, Duplex steel**

FEATURES

- Short-pattern structure reduces valve weight and eliminates need for pipe support frames
- Gate self-scrapes attached media during opening and closing, aiding sealing
- Knife gate profile cuts through media, suitable for slurry and slagging applications
- Clamp connection with wedge limit provides sealing force and reliable seal
- Wear-resistant bushings available in different materials to extend service life
- Combined packing sealing system for improved sealing performance
- Multiple actuation options: electric, gearbox, pneumatic, hydraulic

OPTIONS & NOTES

- Wear-resistant bushings of different materials can be provided according to requirements