

CHECK VALVE

NSCV – DN400–DN1200

REF **EFC-387** ISSUED 11 Jun 2026

SPECIFICATIONS

Size	DN400–DN1200
Pressure	PN10–PN25
End connection	flanged (EN 1092-2) / flanged (EN 1092-2) / flanged (EN 1092-2)

STANDARDS

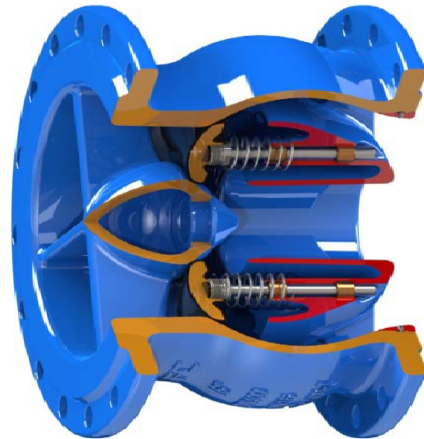
Design	EN 12334, EN 558-1, ISO 5752, EN 1092-2, ISO 7005-2
--------	--

APPROVALS & CERTIFICATIONS

- ISO 9001

APPLICATIONS

- Large transmission mains
- Bulk water supply
- Long rising mains
- High-head pump stations



MATERIALS

body	Ductile Iron GJS 500-7	diffuser	Ductile Iron GJS 500-7
disc	Ductile Iron + EPDM rubber	spring	AISI 304 / 316 Stainless Steel
bushing	Bronze C61900		

FEATURES

- The large-diameter NSCV for DN400–DN1200 is an axial-flow nozzle check valve with a streamlined disc and spring assembly coaxial with the flow path
- The axial design provides the lowest headloss of any check valve type, important on long rising mains where energy savings are significant
- The spring ensures rapid, slam-free closure on pump trip regardless of pipeline profile

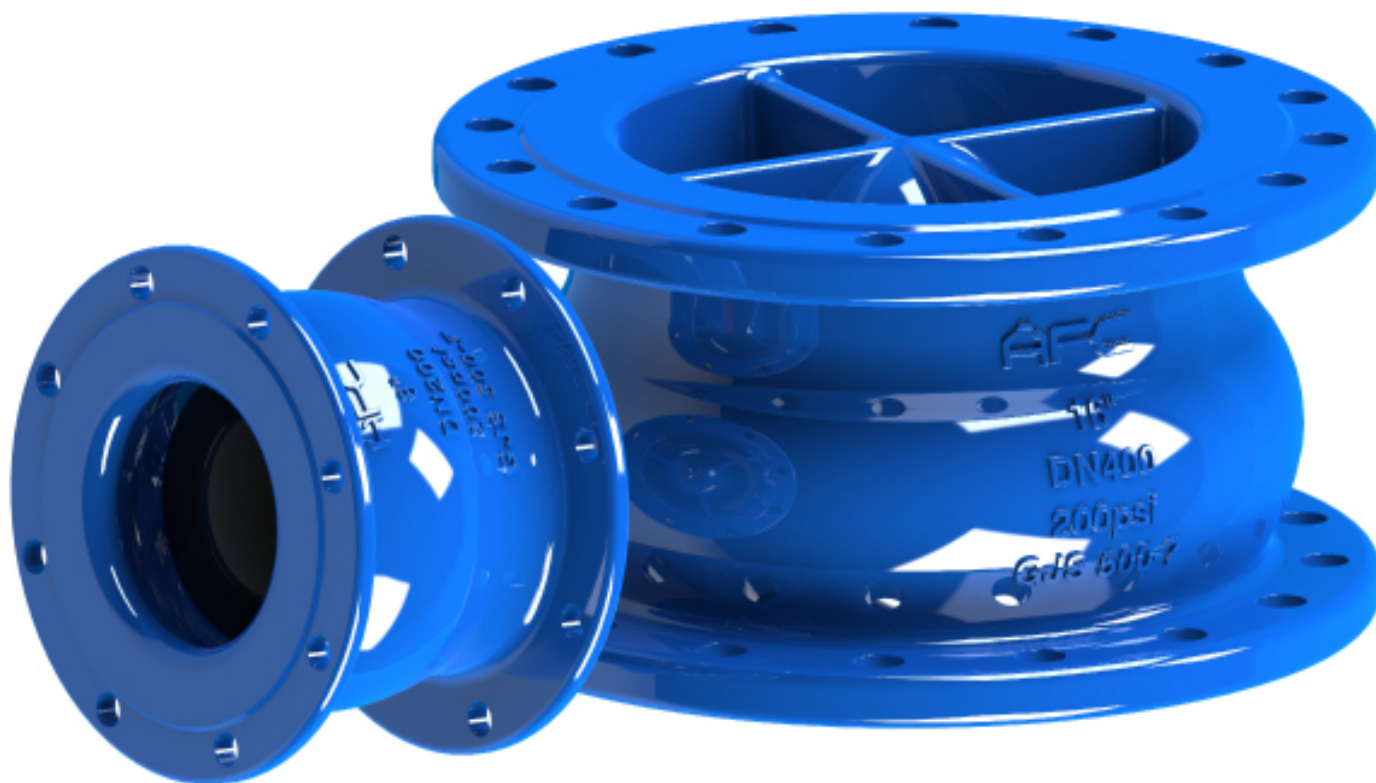
PRESSURE-TEMPERATURE RATING

CLASS	TEMPERATURE	MAX PRESSURE
PN25	-10°C	25 bar
PN25	80°C	25 bar
PN16	-10°C	16 bar
PN16	80°C	16 bar
PN10	-10°C	10 bar
PN10	80°C	10 bar

CHECK VALVE

NSCV – DN400–DN1200

SECTION Technical drawing 1 REF EFC-387



CHECK VALVE

NSCV – DN400–DN1200

SECTION Dimensions per size REF EFC-387

SIZE	L	D_PN16	K_PN16	C_PN10_16	D_PN25	K_PN10_16	K_PN25	C_PN25	D_PN10	K_PN10	C_PN10	C_PN16
DN50	150	165	125	19	—	—	—	—	—	—	—	—
DN65	170	185	145	19	—	—	—	—	—	—	—	—
DN80	180	200	160	19	—	—	—	—	—	—	—	—
DN100	190	220	—	19	235	180	190	—	—	—	—	—
DN125	200	250	—	19	270	210	220	23.5	—	—	—	—
DN150	210	285	—	19	300	240	250	26	—	—	—	—
DN200	230	340	—	20	360	295	310	30	—	—	—	—
DN250	250	405	355	22	425	—	370	34.5	395	350	—	—
DN300	270	460	410	24.5	485	—	430	39.5	445	400	—	—
DN350	290	520	470	24.5	555	—	490	44	505	460	—	—
DN400	310	580	525	—	620	—	550	48	565	515	24.5	24.5
DN450	330	640	585	—	670	—	600	49	615	565	25.5	25.5
DN500	350	715	650	—	730	—	660	52	670	620	26.5	26.5
DN600	390	840	770	—	845	—	770	58	780	725	30	30
DN700	430	910	840	—	960	—	875	46.5	910	840	39.5	39.5

NSCV – DN400–DN1200

Dimensions per size (continued) · EFC-387

SIZE	L	D_PN16	K_PN16	C_PN10_16	D_PN25	K_PN10_16	K_PN25	C_PN25	D_PN10	K_PN10	C_PN10	C_PN16
DN800	470	1025	950	—	1085	—	990	51	1025	950	43	43
DN900	510	1125	1050	—	1185	—	1090	55.5	1125	1050	46.5	46.5
DN1000	550	1255	1170	—	1320	—	1210	60	1230	1160	40	50
DN1200	630	1485	1390	—	1530	—	1420	69	1455	1380	45	57

All dimensions in millimetres unless stated otherwise. Values are nominal; tolerances confirmed at quote.