

CHECK VALVE

# NSCV – DN50–DN350

REF **EFC-386** ISSUED 11 Jun 2026

## SPECIFICATIONS

Size	<b>DN50–DN350</b>
Pressure	<b>PN10–PN25</b>
End connection	<b>flanged (EN 1092-2) / flanged (EN 1092-2) / flanged (EN 1092-2)</b>

## STANDARDS

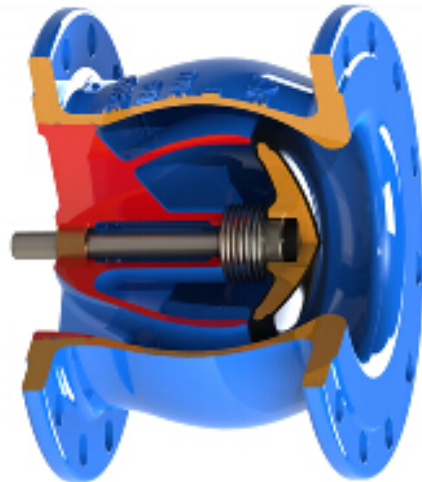
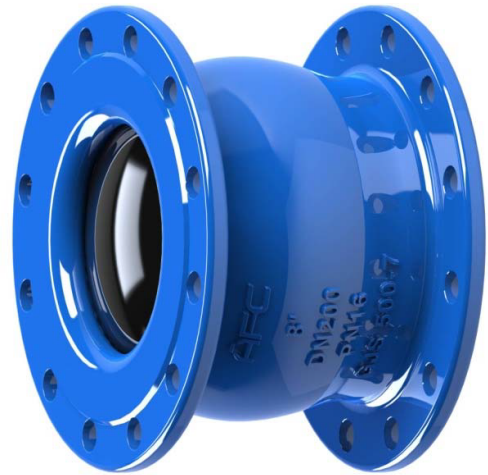
Design	<b>EN 12334, API 594, EN 558-1, ISO 5752, EN 1092-2, ISO 7005-2</b>
--------	---

## APPROVALS & CERTIFICATIONS

- ISO 9001

## APPLICATIONS

- Pump discharge – no slam
- Water supply
- Booster stations
- High-pressure systems



**MATERIALS**

body	<b>Ductile Iron GJS 500-7</b>	diffuser	<b>Ductile Iron GJS 500-7</b>
disc	<b>Ductile Iron + EPDM rubber</b>	spring	<b>AISI 304 / 316 Stainless Steel</b>
bushing	<b>Bronze C61900</b>		

**FEATURES**

- The NSCV for DN50–DN350 uses a spring-loaded disc that begins to close before flow reversal occurs
- The spring force maintains the disc in near-closed position during the pump deceleration phase, so the disc is already seated or nearly so, when the reverse pressure differential arrives
- This eliminates slam and the associated pressure transient
- Available with stainless body for corrosive or high-purity service

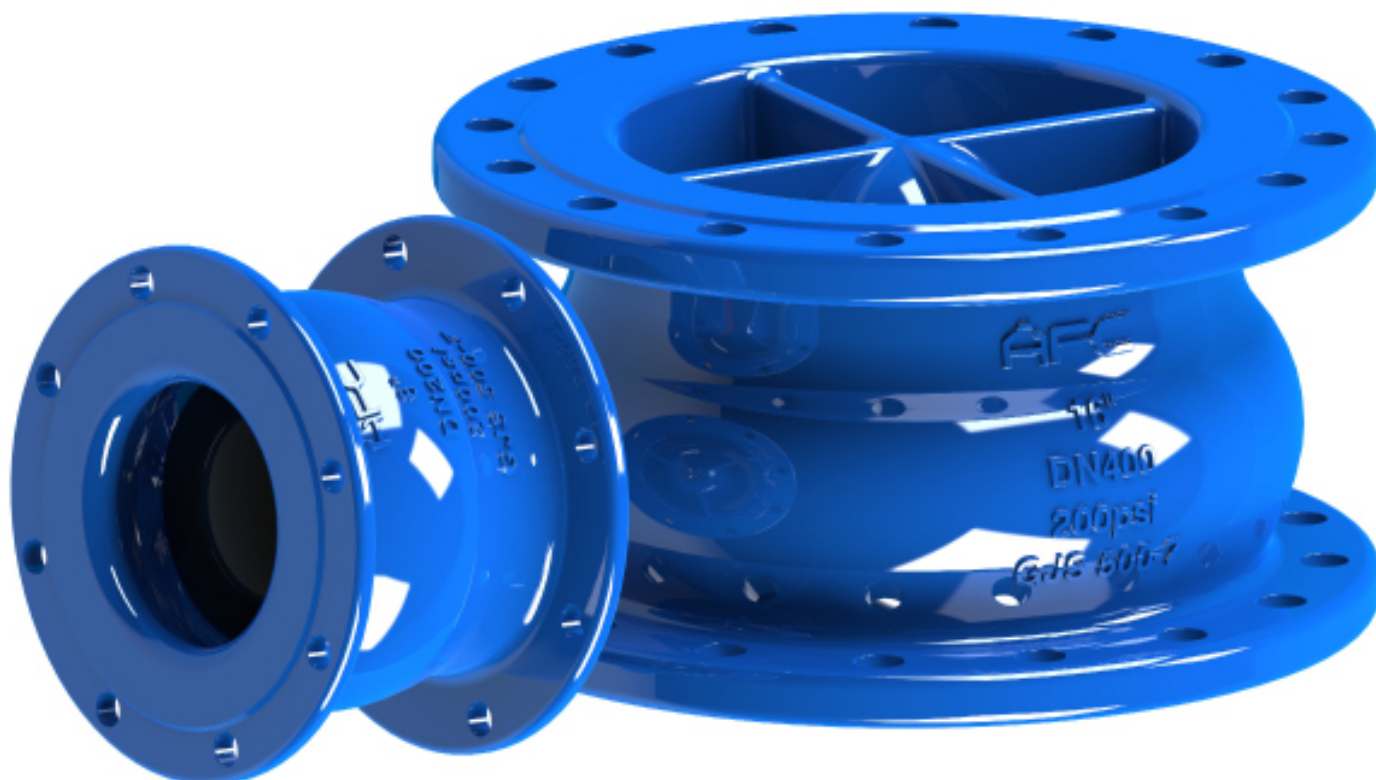
**PRESSURE-TEMPERATURE RATING**

CLASS	TEMPERATURE	MAX PRESSURE
PN25	-10°C	25 bar
PN25	80°C	25 bar
PN16	-10°C	16 bar
PN16	80°C	16 bar
PN10	-10°C	10 bar
PN10	80°C	10 bar

CHECK VALVE

# NSCV – DN50–DN350

SECTION Technical drawing 1 REF EFC-386



CHECK VALVE

# NSCV – DN50–DN350

SECTION Dimensions per size REF EFC-386

SIZE	L	OD_PN16	OK_PN16	C_PN10_16	OD_PN25	OK_PN25	C_PN25	OD_PN10	OK_PN10	C_PN10	C_PN16
DN50	150	165	125	19	—	—	—	—	—	—	—
DN65	170	185	145	19	—	—	—	—	—	—	—
DN80	180	200	160	19	—	—	—	—	—	—	—
DN100	190	220	180	19	235	190	—	—	—	—	—
DN125	200	250	210	19	270	220	23.5	—	—	—	—
DN150	210	285	240	19	300	250	26	—	—	—	—
DN200	230	340	295	20	360	310	30	—	—	—	—
DN250	250	405	355	22	425	370	34.5	395	350	—	—
DN300	270	460	410	24.5	485	430	39.5	445	400	—	—
DN350	290	520	470	24.5	555	490	44	505	460	—	—
DN400	310	580	525	—	620	550	48	565	515	24.5	24.5
DN450	330	640	585	—	670	600	49	615	565	25.5	25.5
DN500	350	715	650	—	730	660	52	670	620	26.5	26.5
DN600	390	840	770	—	845	770	58	780	725	30	30
DN700	430	910	840	—	960	875	46.5	910	840	39.5	39.5

## NSCV – DN50–DN350

Dimensions per size (continued) · EFC-386

SIZE	L	OD_PN16	OK_PN16	C_PN10_16	OD_PN25	OK_PN25	C_PN25	OD_PN10	OK_PN10	C_PN10	C_PN16
<b>DN800</b>	470	1025	950	—	1085	990	51	1025	950	43	43
<b>DN900</b>	510	1125	1050	—	1185	1090	55.5	1125	1050	46.5	46.5
<b>DN1000</b>	550	1255	1170	—	1320	1210	60	1230	1160	40	50
<b>DN1200</b>	630	1485	1390	—	1530	1420	69	1455	1380	45	57

*All dimensions in millimetres unless stated otherwise. Values are nominal; tolerances confirmed at quote.*