

GATE VALVE

RSV Gate Valve – Bare Shaft

REF **EFC-377** ISSUED 11 Jun 2026

SPECIFICATIONS

Size	DN50–DN600
Pressure	PN10–PN16
End connection	flanged (EN 1092-2) / flanged (EN 1092-2)

STANDARDS

Design	EN 1074-2, EN 1171, ISO 5996, BS EN 1074-2, BS 5163, BS 1171, EN 1092-2, EN 558-1
--------	--

APPROVALS & CERTIFICATIONS

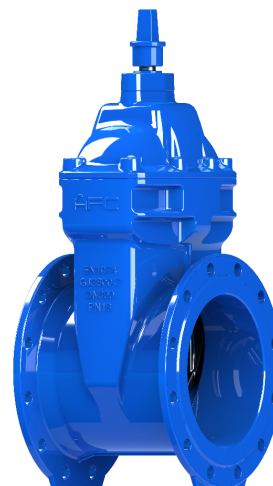
- WRAS
- FM Approved
- UL Listed
- ISO 9001
- CE Mark

COATINGS & LINING

- Fusion-bonded epoxy (250µm)

APPLICATIONS

- Buried water mains
- Water distribution
- Sewage isolation
- Water service connections



MATERIALS

body	Ductile Iron EN GJS 500-7	bonnet	Ductile Iron EN GJS 500-7
stem	AISI 420 / 431 Stainless Steel	wedge	Ductile Iron + EPDM rubber encapsulated

FEATURES

- The bare shaft RSV is the standard configuration for buried water distribution and sewage networks operated via a surface box and extension spindle
- The ductile iron body is fusion-bonded epoxy coated to a minimum 250µm inside and out, providing long-term corrosion protection in aggressive soils
- The EPDM-encapsulated wedge provides bubble-tight shut-off and resists corrosion in potable water service

PRESSURE-TEMPERATURE RATING

CLASS	TEMPERATURE	MAX PRESSURE
PN16	-10°C	16 bar
PN16	80°C	16 bar

GATE VALVE

RSV Gate Valve – Bare Shaft

SECTION Technical drawing 1 REF EFC-377



GATE VALVE

RSV Gate Valve – Bare Shaft

SECTION Dimensions per size REF EFC-377

SIZE	L	H	ØD	ØK	C	ØB
DN700	610	1340	910	840	39.5	794
DN800	660	1515	1025	950	43	901
DN900	711	1875	1125	1050	46.5	1001

All dimensions in millimetres unless stated otherwise. Values are nominal; tolerances confirmed at quote.