

BUTTERFLY VALVE

FBGD – Double Eccentric Flange Butterfly Valve

REF **EFC-375** ISSUED 11 Jun 2026

SPECIFICATIONS

Size	DN100–DN1800
Pressure	PN10–PN25
End connection	flanged (EN 1092-2) / flanged (EN 1092-2)

STANDARDS

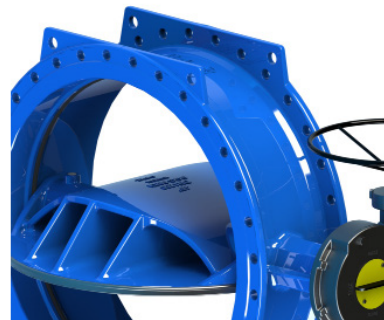
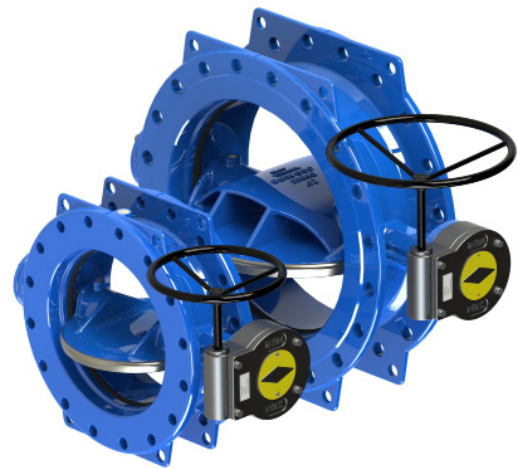
Design **EN 593, API 609, ISO 5211, EN 558-1**

APPROVALS & CERTIFICATIONS

- ISO 9001
- CE Mark

APPLICATIONS

- Water distribution
- Industrial water
- Throttling service
- Water treatment
- Fire protection



MATERIALS

body	Ductile Iron GJS 500-7	disc	Ductile Iron GJS 500-7
shaft	AISI 420 / 304 / 316	body seat	EPDM rubber

FEATURES

- The FBGD double-eccentric (high-performance) butterfly valve uses a two-offset disc geometry that lifts the disc clear of the seat immediately on opening, eliminating seat friction and wear
- Suitable for frequent operation, throttling service and applications demanding tight shut-off to ANSI Class VI
- Available in ductile iron or stainless body with a wide range of seat materials for media compatibility

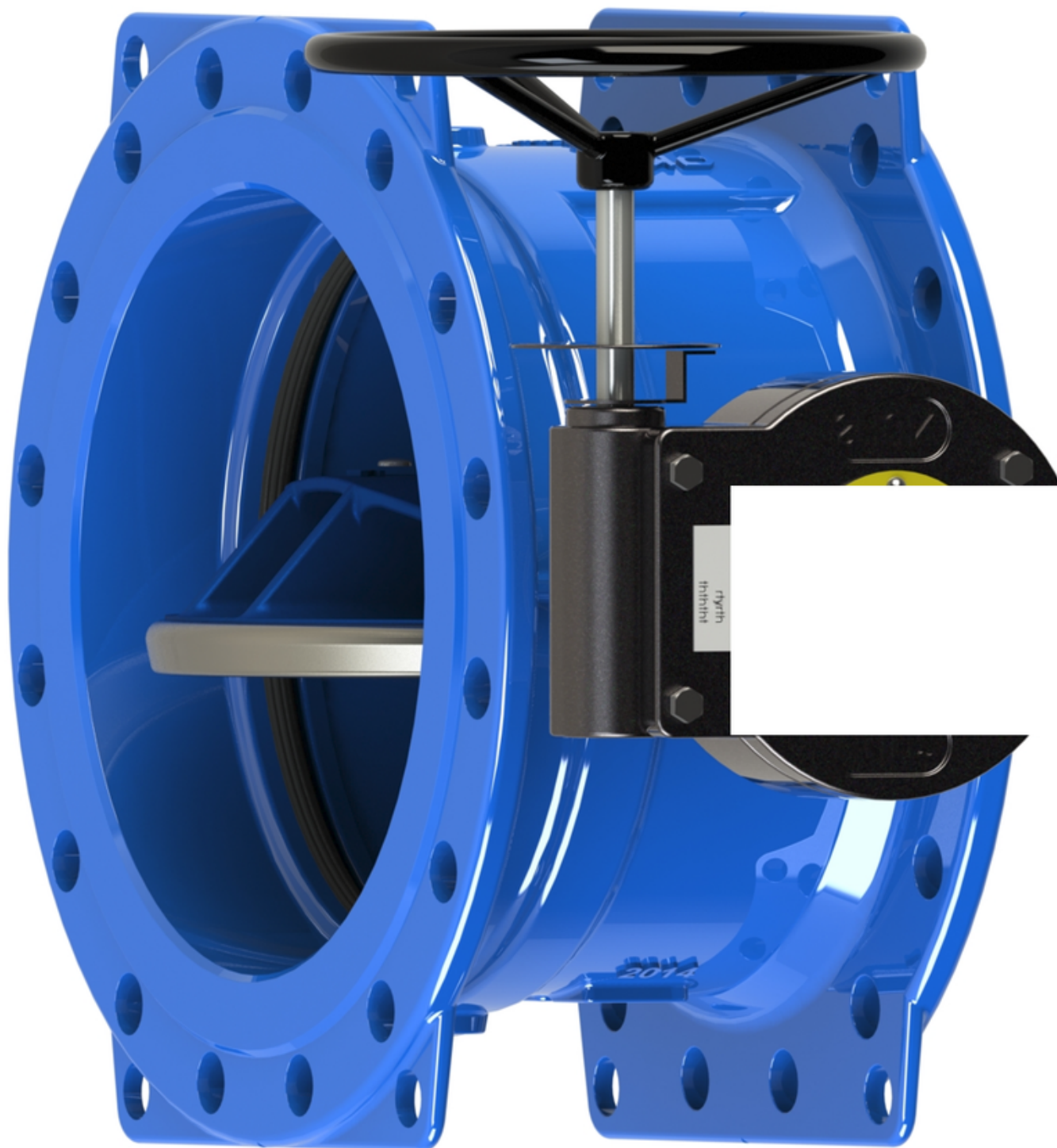
PRESSURE-TEMPERATURE RATING

CLASS	TEMPERATURE	MAX PRESSURE
PN10	-10°C	10 bar
PN10	80°C	10 bar
PN16	-10°C	16 bar
PN16	80°C	16 bar

BUTTERFLY VALVE

FBGD – Double Eccentric Flange Butterfly Valve

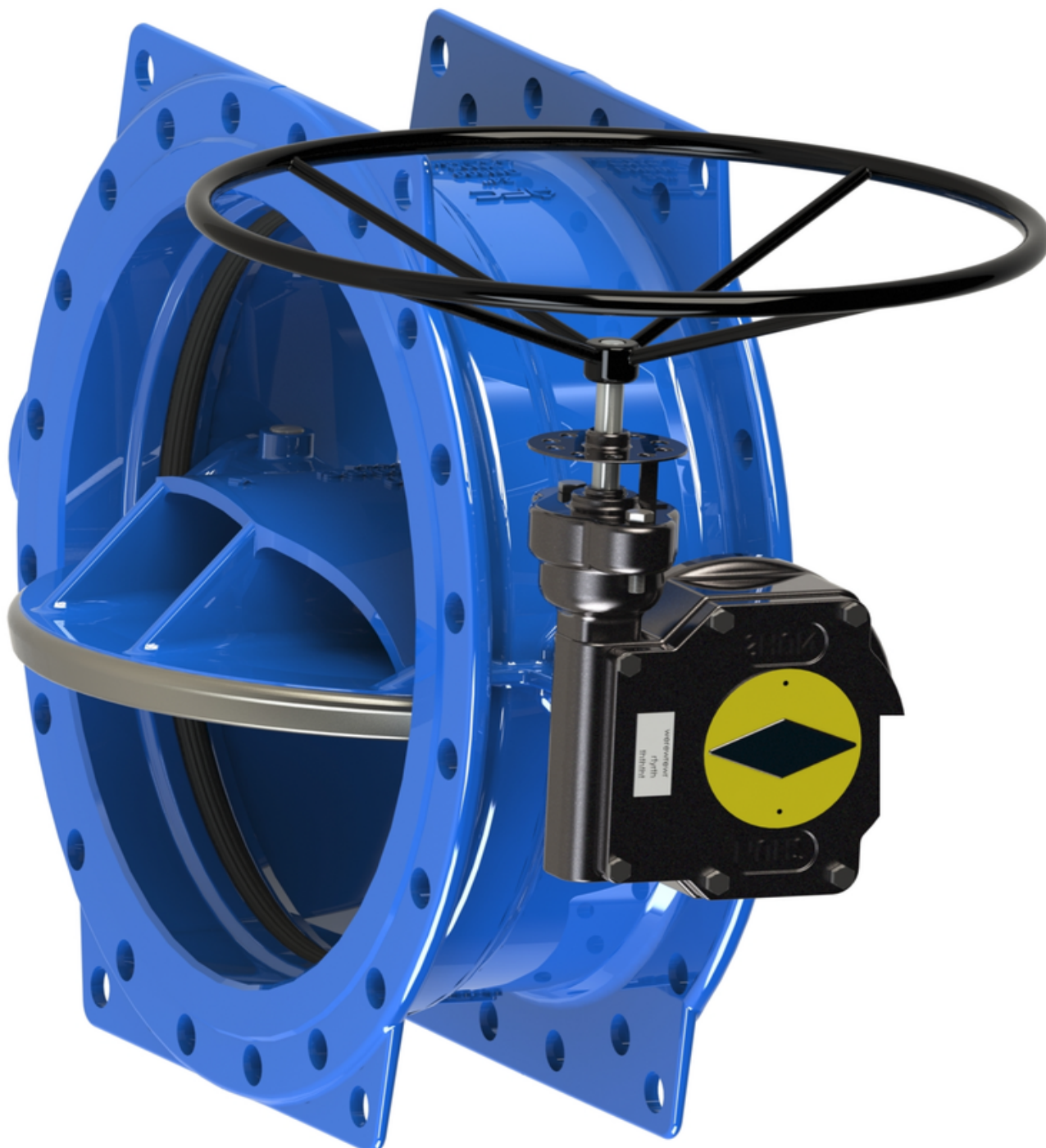
SECTION Technical drawing 1 of 2 REF EFC-375



BUTTERFLY VALVE

FBGD – Double Eccentric Flange Butterfly Valve

SECTION Technical drawing 2 of 2 REF EFC-375



BUTTERFLY VALVE

FBGD – Double Eccentric Flange Butterfly Valve

SECTION Dimensions per size REF EFC-375

SIZE	L_EN558_13	EN558_14	H1	H2	H3	B	K	D	C	B_PN10	K_PN10	K_PN16	B_PN16	D_PN10	D_PN16	C_PN10	C_PN16
DN100	127	190	155	155	25	156	180	220	19	—	—	—	—	—	—	—	—
DN150	140	210	212	215	40	211	240	285	19	—	—	—	—	—	—	—	—
DN200	152	230	248	250	48	266	295	340	20	—	—	—	—	—	—	—	—
DN250	165	250	268	280	48	—	—	405	22	319	350	355	—	—	—	—	—
DN300	178	270	322	315	50	370	—	460	24.5	—	400	410	—	—	—	—	—
DN350	190	290	350	335	50	429	—	520	26.5	—	460	470	—	—	—	—	—
DN400	216	310	375	355	55	480	—	580	28	—	515	525	—	—	—	—	—
DN450	222	330	415	405	55	—	—	640	30	530	565	585	548	—	—	—	—
DN500	229	350	450	425	55	—	—	715	31.5	582	620	650	609	—	—	—	—
DN600	267	390	520	525	55	—	—	—	—	682	725	770	720	780	840	30	36
DN700	292	430	600	565	75	—	—	—	—	794	840	840	794	895	910	32.5	39.5
DN800	318	470	660	640	75	—	—	—	—	901	950	950	901	1015	1025	35	43
DN900	330	510	725	718	100	—	—	—	—	1001	1050	1050	1001	1115	1125	37.5	46.5
DN1000	410	550	800	785	110	—	—	—	—	1112	1160	1170	1112	1230	1255	40	50

FBGD – Double Eccentric Flange Butterfly Valve

Dimensions per size (continued) · EFC-375

SIZE	L_EN558_13	L_EN558_14	H1	H2	H3	B	K	D	C	B_PN10	K_PN10	K_PN16	B_PN16	D_PN10	D_PN16	C_PN10	C_PN16
DN1200	470	630	950	940	110	—	—	—	—	1328	1380	1390	1328	1455	1485	45	57
DN1400	530	710	990	1070	150	—	—	—	—	1530	1590	1590	1530	1675	1685	46	60
DN1600	600	790	1080	1200	175	—	—	—	—	1750	1820	1820	1750	1915	1930	49	65
DN1800	670	870	1190	1310	180	—	—	—	—	1950	2020	2020	1950	2115	2130	52	70

All dimensions in millimetres unless stated otherwise. Values are nominal; tolerances confirmed at quote.