

CONTROL VALVE

P26U Pressure Management Valve

REF **EFC-370** ISSUED 15 Jun 2026

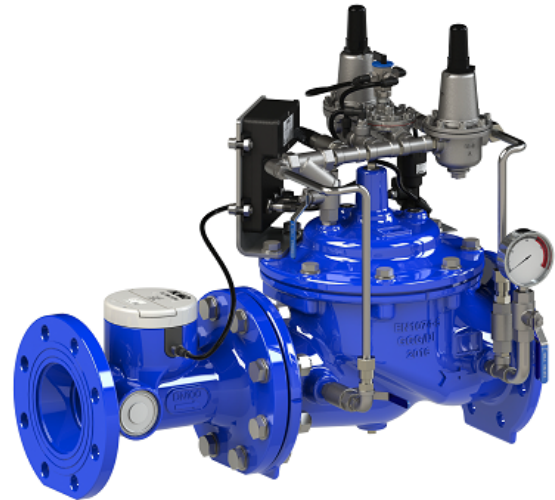
SPECIFICATIONS

APPROVALS & CERTIFICATIONS

- ISO 9001

APPLICATIONS

- Advanced leakage reduction
- Demand-responsive pressure management
- District metered areas
- Smart water networks



FEATURES

- The P26U flow-modulated pressure management pilot adjusts the downstream pressure set point in proportion to measured flow, delivering higher pressure during peak demand and lower pressure during low-demand periods
- Unlike fixed time-based pilots, the P26U responds to actual flow conditions, providing the minimum pressure required to meet current demand at all times
- This results in greater leakage reduction and energy savings than time-based control alone

PRESSURE-TEMPERATURE RATING

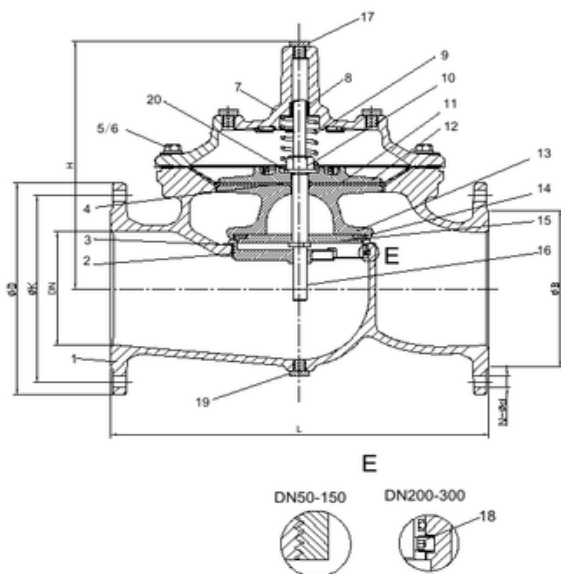
| CLASS | TEMPERATURE | MAX PRESSURE |
|-------|-------------|--------------|
| PN25 | -10°C | 25 bar |
| PN25 | 80°C | 25 bar |

CONTROL VALVE

P26U Pressure Management Valve

SECTION Technical drawing 1 of 3 REF EFC-370

A900-Main Valve DN50-DN350



Parts List

| No. | Description | Material | Standard |
|-----|---------------|-------------------------|--------------------|
| 1 | Body | Ductile Iron | GJS 500-7 |
| 2 | Seat | Stainless Steel | AISI 304/316 |
| 3 | O-ring | Rubber | NBR |
| 4 | O-ring | Rubber | NBR |
| 5 | Bolt | Stainless Steel | A2/A4 |
| 6 | Washer | Stainless Steel | A2/A4 |
| 7 | Bonnet | Ductile Iron | GJS 500-7 |
| 8 | Bush | Bronze | C61900 |
| 9 | Spring | Stainless Steel | AISI 304/316 |
| 10 | Caulking Nut | Stainless Steel | A4 |
| 11 | Diaphragm | Nylon Reinforced Rubber | EPDM +Nylon Fabric |
| 12 | Fixing holder | Ductile Iron | GJS 500-7 |
| 13 | Disc Holder | Ductile Iron | GJS 500-7 |
| 14 | Seal | Rubber | EPDM |
| 15 | Seat Retainer | Stainless Steel | AISI 304/316 |
| 16 | Stem | Stainless Steel | AISI 304/316 |
| 17 | Plug | Stainless Steel | AISI 304/316 |
| 18 | Screw | Stainless Steel | A2/A4 |
| 19 | Plug | Stainless Steel | A2/A4 |
| 20 | Washer | Stainless Steel | A2/A4 |

Dimension:

| DN | Model Code | L | ØD | | | ØK | | | H | N-Ød | | | Unit: mm ØB | | |
|------|------------|-----|------|------|------|------|------|------|-----|--------|--------|--------|----------------|------|------|
| | | | PN10 | PN16 | PN25 | PN10 | PN16 | PN25 | | PN10 | PN16 | PN25 | PN10 | PN16 | PN25 |
| 50 | A900-0050 | 230 | 165 | 165 | 165 | 125 | 125 | 125 | 177 | 4-Ø19 | 4-Ø19 | 4-Ø19 | Ø99 | Ø99 | Ø99 |
| 65 | A900-0065 | 290 | 185 | 185 | 185 | 145 | 145 | 145 | 202 | 4-Ø19 | 4-Ø19 | 8-Ø19 | Ø118 | Ø118 | Ø118 |
| 80 | A900-0080 | 310 | 200 | 200 | 200 | 160 | 160 | 160 | 219 | 8-Ø19 | 8-Ø19 | 8-Ø19 | Ø132 | Ø132 | Ø132 |
| 100 | A900-0100 | 350 | 220 | 220 | 235 | 180 | 180 | 190 | 243 | 8-Ø19 | 8-Ø19 | 8-Ø23 | Ø156 | Ø156 | Ø156 |
| *125 | A900-0125 | 400 | 250 | 250 | 270 | 210 | 210 | 220 | 243 | 8-Ø19 | 8-Ø19 | 8-Ø28 | Ø156 | Ø156 | Ø156 |
| 150 | A900-0150 | 480 | 285 | 285 | 300 | 240 | 240 | 250 | 333 | 8-Ø23 | 8-Ø23 | 8-Ø28 | Ø211 | Ø211 | Ø211 |
| 200 | A900-0200 | 600 | 340 | 340 | 360 | 295 | 295 | 310 | 428 | 8-Ø23 | 12-Ø23 | 12-Ø28 | Ø266 | Ø266 | Ø274 |
| 250 | A900-0250 | 730 | 405 | 405 | 425 | 350 | 355 | 370 | 478 | 12-Ø23 | 12-Ø28 | 12-Ø31 | Ø319 | Ø319 | Ø330 |
| 300 | A900-0300 | 850 | 460 | 460 | 485 | 400 | 410 | 430 | 538 | 12-Ø23 | 12-Ø28 | 16-Ø31 | Ø370 | Ø370 | Ø389 |
| *350 | A900-0350 | 980 | 520 | 520 | 555 | 460 | 470 | 490 | 550 | 16-Ø23 | 16-Ø28 | 16-Ø34 | Ø429 | Ø429 | Ø448 |

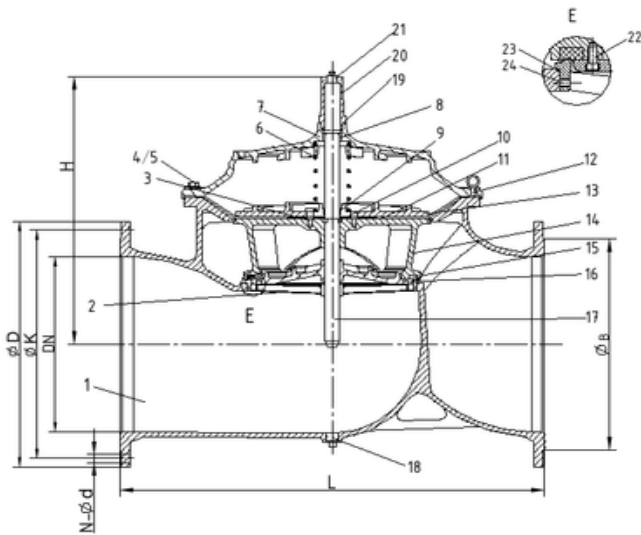
NOTE: 1. *DN125/350 use same internal as DN100/300
2. AISI 304 factory standard material. consult factory for AISI 316 material.

CONTROL VALVE

P26U Pressure Management Valve

SECTION Technical drawing 2 of 3 REF EFC-370

A900-Main Valve DN400-DN800



Parts List

| No. | Description | Material | Standard |
|-----|---------------|-------------------------|--------------------|
| 1 | Body | Ductile Iron | GJS 500-7 |
| 2 | Seat | Stainless Steel | AISI 304/316 |
| 3 | Screw | Stainless Steel | A2/A4 |
| 4 | Screw | Stainless Steel | A2/A4 |
| 5 | Screw | Stainless Steel | A2/A4 |
| 6 | Spring | Stainless Steel | AISI 304/316 |
| 7 | Bonnet | Ductile Iron | GJS 500-7 |
| 8 | Bush | Bronze | C61900 |
| 9 | O-ring | Rubber | NBR |
| 10 | Fix Washer | Bronze | C61900 |
| 11 | Diaphragm | Nylon Reinforced Rubber | EPDM +Nylon Fabric |
| 12 | Eye Bolts | Carbon Steel | 1040 |
| 13 | Fixing Holder | Ductile Iron | GJS 500-7 |
| 14 | Disc Holder | Ductile Iron | GJS 500-7 |
| 15 | Seal | Rubber | EPDM |
| 16 | Seal Retainer | Ductile Iron | GJS 500-7 |
| 17 | Stem | Stainless Steel | AISI 304/316 |
| 18 | Plug | Stainless Steel | AISI 304/316 |
| 19 | O-ring | Rubber | NBR |
| 20 | Cap | Ductile Iron | GJS 500-7 |
| 21 | Plug | Stainless Steel | AISI 304/316 |
| 22 | Screw | Stainless Steel | A2/A4 |
| 23 | O-ring | Rubber | NBR |
| 24 | Screw | Stainless Steel | A2/A4 |

Dimension:

Unit: mm

| DN | Model Code | L | H | ØD | | | ØK | | | N-Ød | | | ØB | | |
|------|------------|------|------|------|------|------|------|------|------|--------|--------|--------|------|------|------|
| | | | | PN10 | PN16 | PN25 | PN10 | PN16 | PN25 | PN10 | PN16 | PN25 | PN10 | PN16 | PN25 |
| 400 | A900-0400 | 1100 | 710 | 580 | 580 | 620 | 515 | 525 | 550 | 16-Ø28 | 16-Ø31 | 16-Ø37 | 480 | 480 | 503 |
| *450 | A900-0450 | 1200 | 720 | 640 | 640 | 670 | 565 | 585 | 600 | 20-Ø28 | 20-Ø31 | 20-Ø37 | 530 | 548 | 548 |
| 500 | A900-0500 | 1250 | 822 | 715 | 715 | 730 | 620 | 650 | 660 | 20-Ø28 | 20-Ø34 | 20-Ø37 | 582 | 609 | 609 |
| 600 | A900-0600 | 1450 | 885 | 840 | 840 | 845 | 725 | 770 | 770 | 20-Ø31 | 20-Ø37 | 20-Ø40 | 682 | 720 | 720 |
| *700 | A900-0700 | 1650 | 910 | 910 | 910 | 960 | 840 | 840 | 875 | 24-Ø31 | 24-Ø37 | 24-Ø43 | 682 | 720 | 720 |
| 800 | A900-0800 | 1850 | 1260 | 1025 | 1025 | 1085 | 950 | 950 | 990 | 24-Ø34 | 24-Ø40 | 24-Ø49 | 901 | 901 | 928 |

Note: 1. *DN450/700 use same internal as DN400/600.
2. AISI 304 factory standard material. consult factory for AISI 316 material.

CONTROL VALVE

P26U Pressure Management Valve

SECTION Technical drawing 3 of 3 REF EFC-370

Pressure management advantage

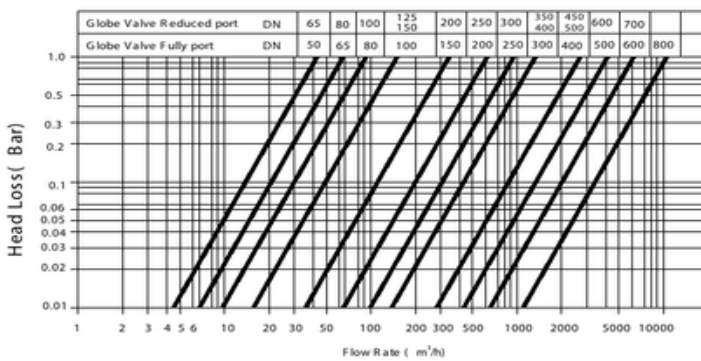


Lower down the pressure based on time or flow rate are allowable to management the water distribution system

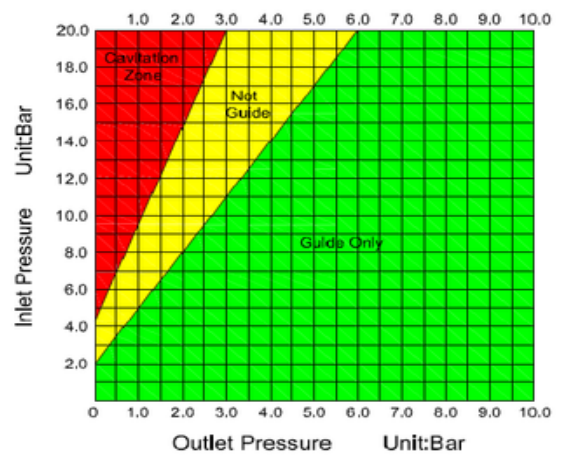
It helps to reduce the leakage rate in distribution system.

— Upstream pressure
— Flow rate – user demand
— Downstream pressure

Head Loss Curve



Cavitation



Ordering Code

P26M-0200-16-YYY

Model:

P26M:
Pressure management valve -
Time based

P26U:
Pressure management valve -
Flow rate based

YYY: Special Code
Please Consult Factory

Pressure Rating:
10: PN10
16: PN16
25: PN25
A1: ANSI 125 F/F
A5: ANSI 150 R/F

Size:
0080: 80 mm
0200: 200 mm

CONTROL VALVE

P26U Pressure Management Valve

SECTION Dimensions per size REF EFC-370

| SIZE | L | H | ØD_PN10 | ØD_PN16 | ØD_PN25 | ØK_PN10 | ØK_PN16 | ØK_PN25 | ØB_PN10 | ØB_PN16 | ØB_PN25 |
|-------|------|------|---------|---------|---------|---------|---------|---------|---------|---------|---------|
| DN50 | 230 | 177 | 165 | 165 | 165 | 125 | 125 | 125 | 99 | 99 | 99 |
| DN65 | 290 | 202 | 185 | 185 | 185 | 145 | 145 | 145 | 118 | 118 | 118 |
| DN80 | 310 | 219 | 200 | 200 | 200 | 160 | 160 | 160 | 132 | 132 | 132 |
| DN100 | 350 | 243 | 220 | 220 | 235 | 180 | 180 | 190 | 156 | 156 | 156 |
| DN125 | 400 | 243 | 250 | 250 | 270 | 210 | 210 | 220 | 156 | 156 | 156 |
| DN150 | 480 | 333 | 285 | 285 | 300 | 240 | 240 | 250 | 211 | 211 | 211 |
| DN200 | 600 | 428 | 340 | 340 | 360 | 295 | 295 | 310 | 266 | 266 | 274 |
| DN250 | 730 | 478 | 405 | 405 | 425 | 350 | 355 | 370 | 319 | 319 | 330 |
| DN300 | 850 | 538 | 460 | 460 | 485 | 400 | 410 | 430 | 370 | 370 | 389 |
| DN350 | 980 | 550 | 520 | 520 | 555 | 460 | 470 | 490 | 429 | 429 | 448 |
| DN400 | 1100 | 710 | 580 | 580 | 620 | 515 | 525 | 550 | 480 | 480 | 503 |
| DN450 | 1200 | 720 | 640 | 640 | 670 | 565 | 585 | 600 | 530 | 548 | 548 |
| DN500 | 1250 | 822 | 715 | 715 | 730 | 620 | 650 | 660 | 582 | 609 | 609 |
| DN600 | 1450 | 885 | 840 | 840 | 845 | 725 | 770 | 770 | 682 | 720 | 720 |
| DN700 | 1650 | 910 | 910 | 910 | 960 | 840 | 840 | 875 | 682 | 720 | 720 |
| DN800 | 1850 | 1260 | 1025 | 1025 | 1085 | 950 | 950 | 990 | 901 | 901 | 928 |

All dimensions in millimetres unless stated otherwise. Values are nominal; tolerances confirmed at quote.