

DISMANTLING JOINT

# Ductile Iron Dismantling Joint

REF **EFC-270** ISSUED 05 Jun 2026

## SPECIFICATIONS

Size	<b>DN50–DN2000</b>
Pressure	<b>PN10–PN40</b>
End connection	<b>flanged (DIN) / flanged (BS) / flanged (ANSI) / flanged (JIS)</b>
Media	<b>water, wastewater</b>

## STANDARDS

Design	<b>EN545, ISO2531</b>
--------	-----------------------

## APPROVALS & CERTIFICATIONS

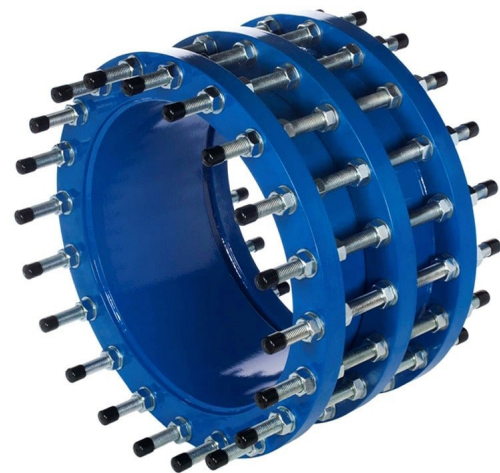
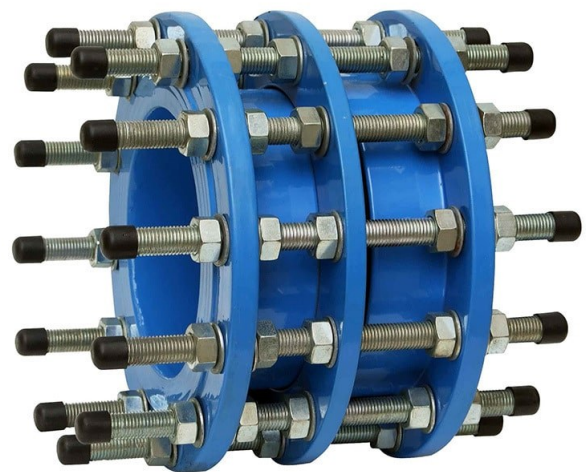
- LR (Lloyd's Register) approved
- ECM (Ente Certificazione Macchine) certified
- ISO certified
- EAC (Eurasian Conformity) marked
- CE marked
- Bureau Veritas certified
- ACS (Attestation de Conformité Sanitaire)
- WRAS Approved Product

## COATINGS & LINING

- Fusion bonded epoxy paint

## APPLICATIONS

- Municipal water supply
- Wastewater treatment
- Building services
- Industrial piping systems



**MATERIALS**

body	<b>Cast Iron, Carbon Steel</b>	flange	<b>Carbon Steel</b>
sealing ring	<b>Elastomer</b>	gland	<b>Carbon Steel</b>
pipe	<b>Carbon Steel</b>		

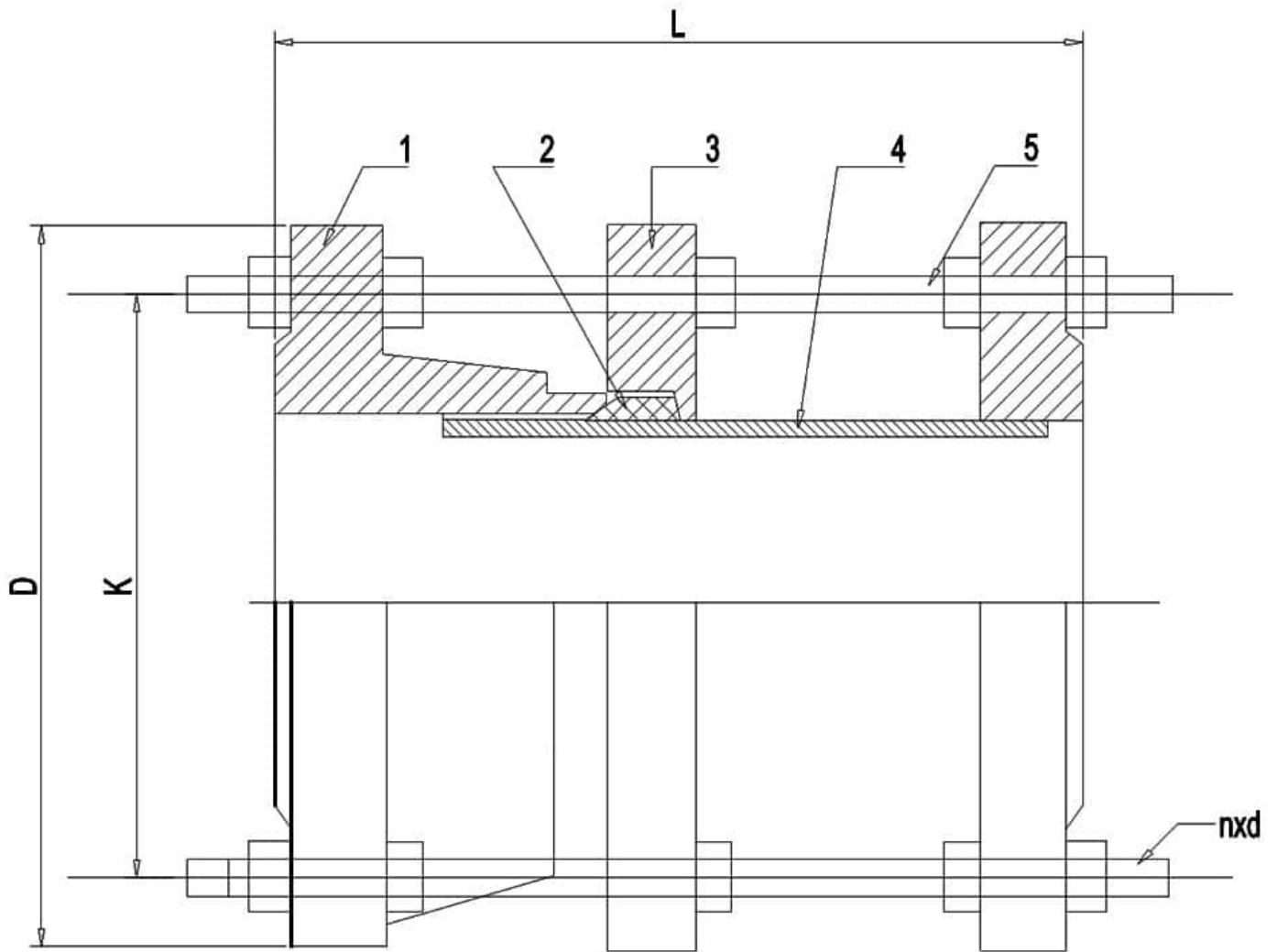
**FEATURES**

- Axial adjustment and compensation for installation tolerances
- Allows on-site dimensional adjustment during installation and maintenance
- Transfers axial thrust back to pipeline during operation
- Compatible with butterfly valves and gate valves
- Allows axial movement to reduce pipe stress
- Facilitates equipment installation or removal without disturbing adjacent pipeline
- Epoxy-coated body for corrosion resistance
- Telescopic short pipe design
- Three-flange dismantling joint construction with two end flanges and one central intermediate flange
- Stud bolt assembly connecting all three flanges
- Bolt holes quantity n, diameter d (nxd) as shown on bolt circle diameter K
- Overall length dimension L across full assembly
- Overall outer diameter D
- Bolt circle diameter K
- Part 1: end flange (left)
- Part 2: sealing/gasket recess element
- Part 3: central intermediate flange/body
- Part 4: sealing/gasket element (right side)
- Part 5: end flange (right)
- Stud bolts with nuts securing the assembly
- Rubber end caps/protectors visible on stud bolt ends

DISMANTLING JOINT

# Ductile Iron Dismantling Joint

SECTION Technical drawing REF EFC-270



DISMANTLING JOINT

# Ductile Iron Dismantling Joint

SECTION Dimensions per size REF EFC-270

SIZE	D_FLANGE	K	N_X_D	L	AXIAL_ADJUSTMENT
DN50	160	125	4x18	200	±20
DN65	180	145	4x18	200	±20
DN80	195	160	4x18	200	±20
DN100	215	180	8x18	200	±20
DN125	245	210	8x18	200	±20
DN150	280	240	8x23	200	±20
DN200	335	195	12x23	200	±20
DN225	365	325	12x23	200	±20
DN250	405	355	12x26	200	±20
DN300	460	410	16x26	220	±25
DN350	520	470	16x26	220	±25
DN400	580	525	16x30	220	±25
DN450	640	585	20x30	220	±25
DN500	715	650	20x34	220	±25
DN600	840	770	20x36	240	±25
DN700	910	840	24x36	240	±25

## Ductile Iron Dismantling Joint

Dimensions per size (continued) · EFC-270

SIZE	D_FLANGE	K	N_X_D	L	AXIAL_ADJUSTMENT
DN800	1025	950	24x39	350	±30
DN900	1125	1050	28x39	350	±30
DN1000	1255	1170	28x42	350	±30
DN1200	1485	1390	32x48	370	±30
DN1400	1685	1590	36x48	370	±30
DN1600	1930	1820	40x55	380	±30
DN1800	2130	2100	44x55	380	±30
DN2000	2345	2230	48x60	400	±30

All dimensions in millimetres unless stated otherwise. Values are nominal; tolerances confirmed at quote.