

BRONZE MARINE VALVE

Lift Type Check Valve (Marine)

REF **EFC-203** ISSUED 05 Jun 2026

SPECIFICATIONS

Size	DN25–DN65
Pressure	PN16–PN40
End connection	flanged (DIN 2533)
Face-to-face	DIN 3202/2 F32, TS 10873

APPLICATIONS

- Marine



MATERIALS

body	Grey Cast Iron, Ductile Iron, Cast Steel, Bronze, Tin Bronze, Stainless Steel, Duplex Stainless Steel	seat ring	Stainless Steel, Bronze, Tin Bronze
disc	Stainless Steel, Bronze, Tin Bronze	spring	Spring Steel
gasket	Compressed Fibre / Synthetic	bonnet	Grey Cast Iron, Ductile Iron, Cast Steel, Bronze, Tin Bronze, Stainless Steel, Duplex Stainless Steel
stud nut	Carbon Steel	seat	Stainless Steel, Bronze

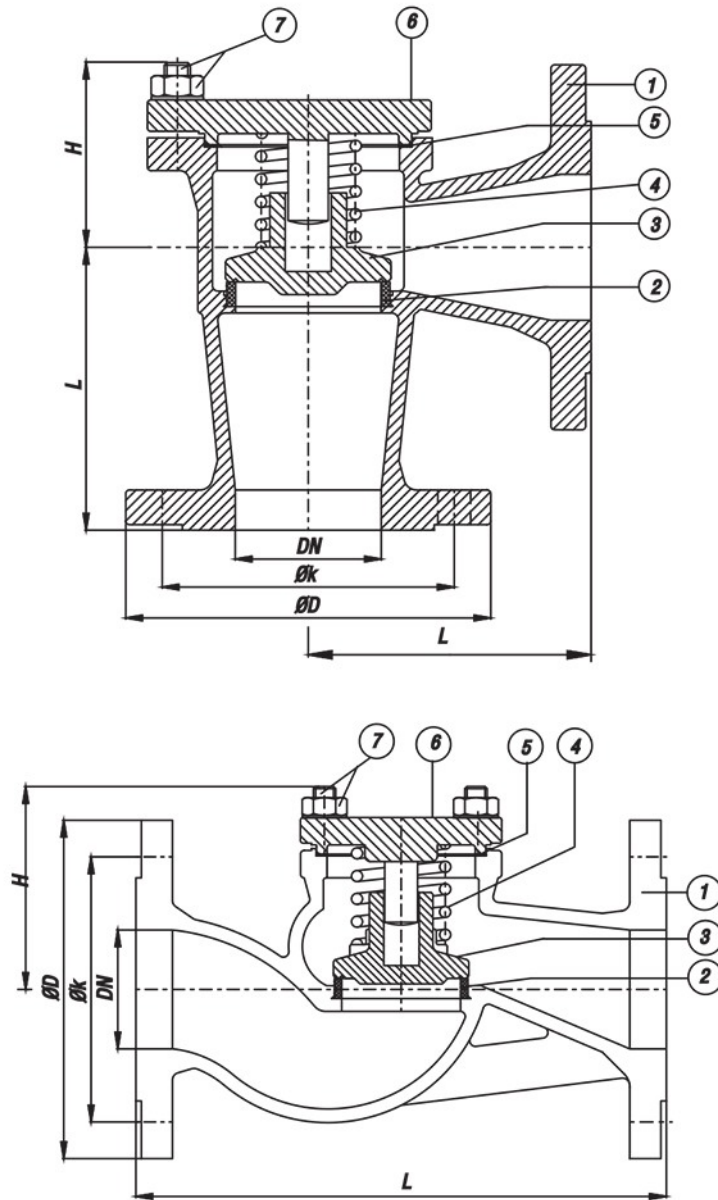
FEATURES

- Spring-assisted lift disc mechanism
- Available with flanged end connections to DIN 2533
- Multiple body and bonnet material options including cast iron, ductile iron, cast steel, bronze, stainless steel, and duplex stainless steel

BRONZE MARINE VALVE

Lift Type Check Valve (Marine)

SECTION Technical drawing REF EFC-203



BRONZE MARINE VALVE

Lift Type Check Valve (Marine)

SECTION Dimensions per size REF EFC-203

SIZE	L	H	OD1	T	AA	WEIGHT
DN25	125	80	1" inch	17	50	1.7 kg
DN32	135	85	1 1/4" inch	25	65	2.4 kg
DN40	151	105	1 1/2" inch	27	75	3 kg
DN50	175	125	2" inch	31	90	4 kg
DN65	202	135	2 1/2" inch	31	95	5.5 kg

All dimensions in millimetres unless stated otherwise. Values are nominal; tolerances confirmed at quote.