

DISMANTLING JOINT

# Dismantling Joints-Rigid Type

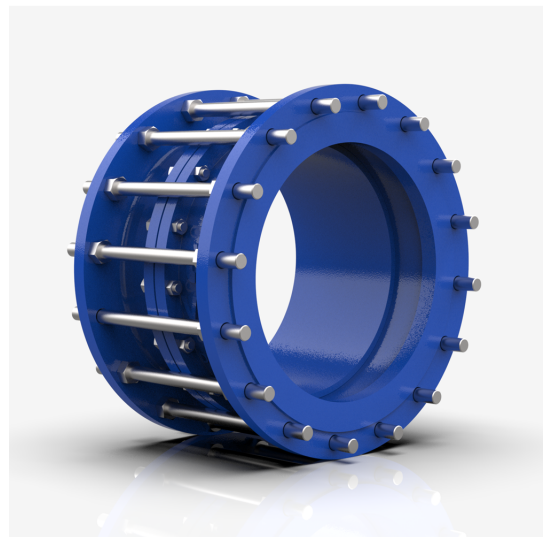
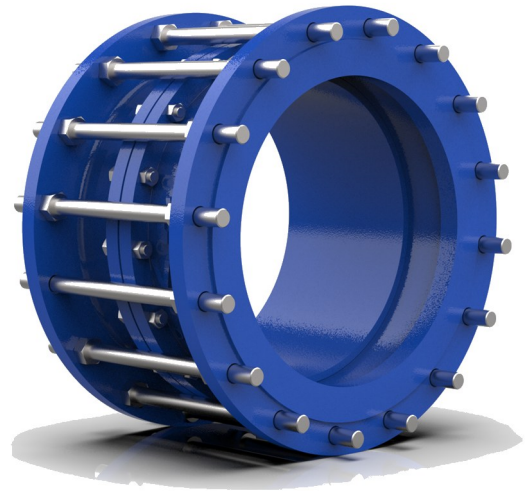
MODEL VDPR-10-16 REF EFC-172 ISSUED 05 Jun 2026

## SPECIFICATIONS

Size	DN100–DN1500
Pressure	PN10–PN16
End connection	flanged (DIN) / flanged (ANSI) / flanged (JIS)

## STANDARDS

Test	EN 12266
------	----------



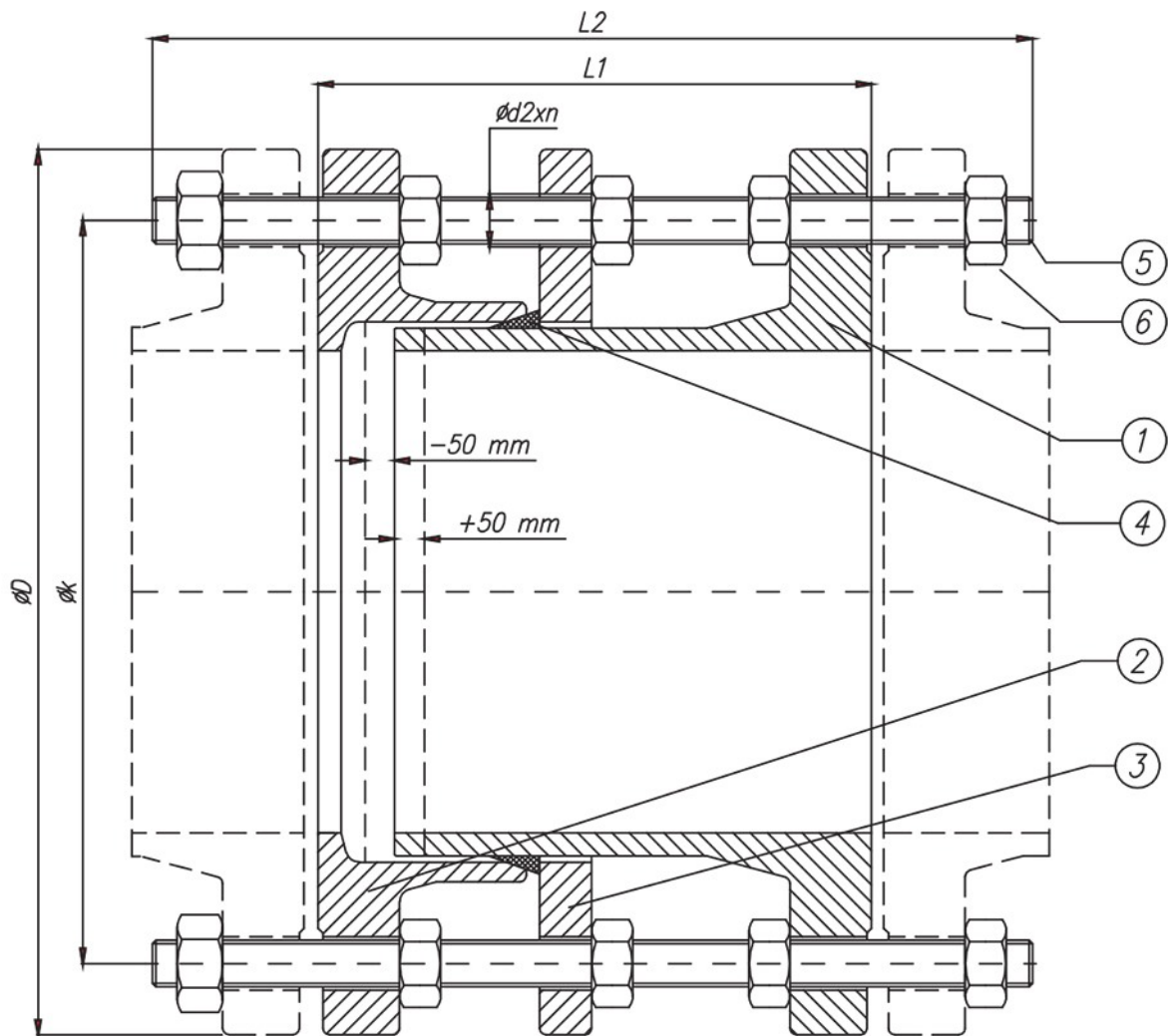
## FEATURES

- Axial adjustment range of  $\pm 50$  mm
- Rigid type construction
- Compatible with DIN, ANSI and JIS flange standards
- Ductile iron body components (GGG-40)
- Galvanised stud bolts and nuts

DISMANTLING JOINT

# Dismantling Joints-Rigid Type

SECTION Technical drawing REF EFC-172



DISMANTLING JOINT

# Dismantling Joints-Rigid Type

SECTION Dimensions per size REF EFC-172

SIZE	L1_PN10	L2_PN10	L1_PN16	L2_PN16	OD_PN10	OK_PN10	OD_PN16	OK_PN16	WEIGHT
DN100	200	310	200	340	220	180	220	180	20 kg
DN125	—	320	200	370	250	210	250	210	23 kg
DN150	—	340	220	370	285	240	285	240	32 kg
DN200	220	360	230	410	340	295	340	295	46 kg
DN250	—	—	250	—	400	350	400	355	57 kg
DN300	—	—	260	—	455	400	455	410	78 kg
DN350	230	—	270	480	505	460	520	470	102 kg
DN400	250	—	—	—	565	515	580	525	128 kg
DN450	—	—	—	—	615	565	640	585	135 kg
DN500	260	370	—	500	670	620	715	650	200 kg
DN600	390	400	—	540	780	725	840	770	305 kg
DN700	410	—	280	560	895	840	910	840	365 kg
DN800	460	—	300	600	1015	950	1025	950	410 kg
DN900	—	480	320	630	1115	1050	1125	1050	540 kg
DN1000	290	—	340	660	1230	1160	1255	1170	700 kg
DN1100	—	—	360	600	1430	1270	1355	1280	820 kg

## Dismantling Joints-Rigid Type

Dimensions per size (continued) · EFC-172

SIZE	L1_PN10	L2_PN10	L1_PN16	L2_PN16	OD_PN10	OK_PN10	OD_PN16	OK_PN16	WEIGHT
<b>DN1200</b>	300	—	380	630	1455	1380	1485	1390	1120 kg
<b>DN1300</b>	320	—	—	—	1575	1490	1590	1490	1210 kg
<b>DN1400</b>	340	—	380	—	1675	1590	1685	1590	1310 kg
<b>DN1500</b>	360	—	400	—	1785	1700	1820	1710	1480 kg

*All dimensions in millimetres unless stated otherwise. Values are nominal; tolerances confirmed at quote.*