

SIGHT GLASS

# Sight Glasses

MODEL VFAG-10-16-25-40 REF EFC-150 ISSUED 05 Jun 2026

## SPECIFICATIONS

Size	DN15–DN250
Pressure	PN10–PN40
End connection	flanged (DIN EN 1092-1-2) / flanged (DIN EN 1092-1-2) / flanged (DIN EN 1092-1-2) / flanged (DIN EN 1092-1-2)
Face-to-face	DIN EN 558-1-1

## STANDARDS

Design	DIN EN 558-1-1
--------	----------------



## MATERIALS

body	grey cast iron, nodular cast iron, cast carbon steel	gasket	compressed fibre
------	--	--------	------------------

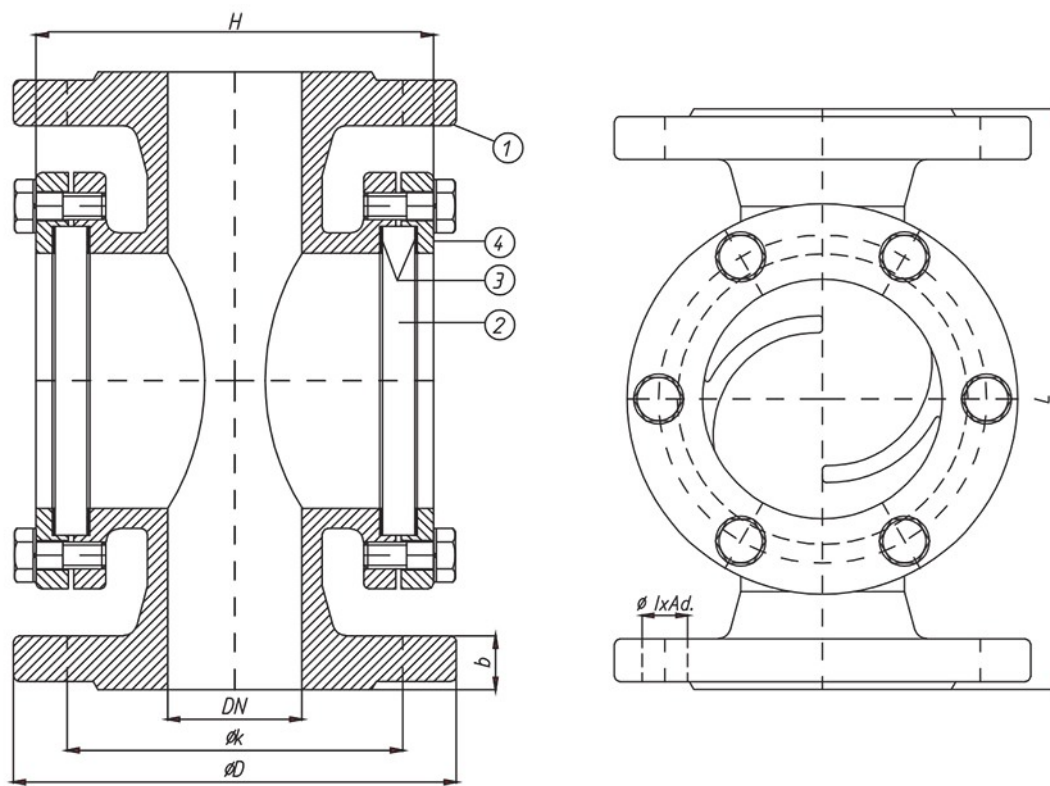
## FEATURES

- Borosilicate glass viewing element to DIN 7080
- Klingerit seal
- Body and cover available in grey cast iron, nodular cast iron, or cast carbon steel
- Face-to-face dimensions per DIN EN 558-1-1
- Flange ends per DIN EN 1092-1-2 and DIN 3202/2-FT
- Available in four pressure ratings: PN10, PN16, PN25, PN40

SIGHT GLASS

# Sight Glasses

SECTION Technical drawing REF EFC-150



SIGHT GLASS

# Sight Glasses

SECTION Dimensions per size REF EFC-150

SIZE	L	H	D_PN10	K_PN10	D_PN16	K_PN16	D_PN25	K_PN25	D_PN40	K_PN40	WEIGHT
DN15	130	110	95	65	95	65	95	65	95	65	4.5 kg
DN20	150	115	105	75	105	75	105	75	105	75	5.5 kg
DN25	160	120	115	85	115	85	115	85	115	85	7.5 kg
DN32	180	125	140	100	140	100	140	100	140	100	10 kg
DN40	200	135	150	110	150	110	150	110	150	110	15 kg
DN50	230	150	165	125	165	125	165	125	165	125	17 kg
DN65	290	175	185	145	185	145	185	145	185	145	26 kg
DN80	310	190	200	160	200	160	200	160	200	160	33 kg
DN100	350	260	220	180	220	180	235	190	235	190	42 kg
DN125	400	280	250	210	250	210	270	220	270	220	52 kg
DN150	480	330	285	240	285	240	300	250	300	250	95 kg
DN200	600	460	340	295	340	295	360	310	375	320	52 kg
DN250	730	510	395	350	405	355	425	370	450	385	95 kg

All dimensions in millimetres unless stated otherwise. Values are nominal; tolerances confirmed at quote.