

JIS VALVE

# JIS 16K Angle Globe Valve

REF **EFC-140** ISSUED 05 Jun 2026

## SPECIFICATIONS

Size	<b>DN50–DN200</b>
Pressure	<b>16K</b>
End connection	<b>flanged (JIS B2239)</b>
Media	<b>water, hot water, cold water, oil, steam</b>

## ACTUATION

- manual handwheel — GG 25 handwheel

## STANDARDS

Design	<b>JIS F7310, JIS F7378</b>
Test	<b>JIS F7400</b>

## APPLICATIONS

- Aboard ships for hot and cold water, oil, and steam

## MATERIALS

body	<b>grey cast iron, ductile iron, carbon steel casting</b>	seat	<b>bronze, stainless steel</b>
disc	<b>grey cast iron, ductile iron, carbon steel casting</b>	gasket	<b>compressed fibre / klingerite</b>
bonnet	<b>grey cast iron, ductile iron, carbon steel casting</b>	packing	<b>graphite</b>
stem	<b>brass/copper alloy, stainless steel</b>	handwheel	<b>grey cast iron</b>

## FEATURES

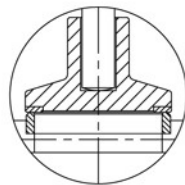
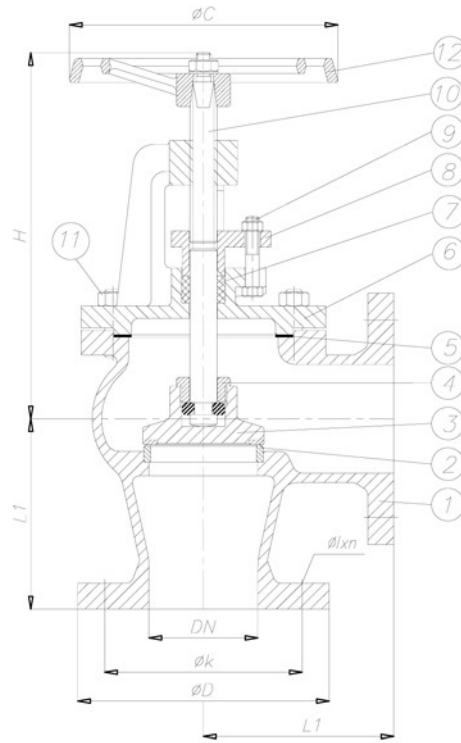
- Angle-pattern globe valve configuration
- Available as Stop valve (STOP) to JIS F7310
- Available as Screw Down Non Return valve (SDNR) to JIS F7378
- Flanged ends to JIS B2239 16K
- Graphite packing



JIS VALVE

# JIS 16K Angle Globe Valve

SECTION Technical drawing REF EFC-140



Screw Down Non Return  
(SDNR)

JIS VALVE

# JIS 16K Angle Globe Valve

SECTION Dimensions per size REF EFC-140

SIZE	L	H	C	D	K	WEIGHT
DN50	120	230	160	155	120	11.1 kg
DN65	130	270	180	175	140	15.6 kg
DN80	150	280	200	200	160	22.6 kg
DN100	170	305	220	225	185	29.5 kg
DN125	200	355	250	270	225	—
DN150	225	390	300	305	260	—
DN200	250	485	400	350	305	—

All dimensions in millimetres unless stated otherwise. Values are nominal; tolerances confirmed at quote.