

JIS VALVE

# JIS 10K Angle Globe Valve

REF **EFC-139** ISSUED 05 Jun 2026

## SPECIFICATIONS

Size	<b>DN50–DN400</b>
Pressure	<b>10K</b>
End connection	<b>flanged (JIS B2239)</b>
Media	<b>water, hot water, cold water, oil, steam</b>

## ACTUATION

- manual handwheel — GG 25 handwheel

## STANDARDS

Design	<b>JIS F7308 STOP, JIS F7376 SDNR</b>
Test	<b>JIS F7400</b>

## APPLICATIONS

- Aboard ships for hot and cold water
- Oil service
- Steam service
- Marine



**MATERIALS**

body	<b>grey cast iron, ductile cast iron, carbon steel casting</b>	seat	<b>bronze, stainless steel</b>
disc	<b>grey cast iron, ductile cast iron, carbon steel casting</b>	gasket	<b>compressed fibre / gasket material</b>
bonnet	<b>grey cast iron, ductile cast iron, carbon steel casting</b>	packing	<b>graphite</b>
stem	<b>copper alloy, stainless steel</b>	handwheel	<b>grey cast iron</b>

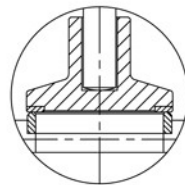
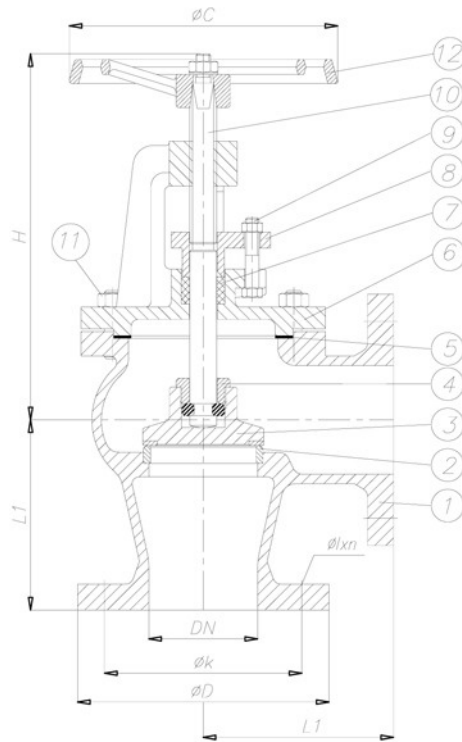
**FEATURES**

- Angle body configuration
- Available as Stop (STOP) variant per JIS F7308
- Available as Screw Down Non Return (SDNR) variant per JIS F7376
- Flanged ends to JIS B2239 10K
- Graphite packing
- Klingerite gasket

JIS VALVE

# JIS 10K Angle Globe Valve

SECTION Technical drawing REF EFC-139



*Screw Down Non Return  
(SDNR)*

JIS VALVE

# JIS 10K Angle Globe Valve

SECTION Dimensions per size REF EFC-139

SIZE	L	H	C	D	K	ØXN	WEIGHT
DN50	120	230	160	155	120	Ø19x4	9.5 kg
DN65	130	270	180	175	140	Ø19x4	13 kg
DN80	140	280	200	185	150	Ø19x8	19.3 kg
DN100	160	305	220	210	175	Ø19x8	23.5 kg
DN125	180	355	250	250	210	Ø23x8	—
DN150	205	390	300	280	240	Ø23x8	—
DN200	230	485	400	330	290	Ø23x12	—
DN250	290	540	400	400	355	Ø25x12	—
DN300	320	610	500	445	400	Ø25x16	—
DN350	360	690	500	490	445	Ø25x16	—
DN400	420	770	630	560	510	Ø27x16	—

All dimensions in millimetres unless stated otherwise. Values are nominal; tolerances confirmed at quote.