

JIS VALVE

JIS 5K Angle Globe Valve

REF **EFC-138** ISSUED 05 Jun 2026

SPECIFICATIONS

Size	DN50–DN400
Pressure	5K
End connection	flanged (JIS B2239)
Media	water, hot water, cold water, oil, steam

ACTUATION

- manual handwheel — GG 25 handwheel

STANDARDS

Design	JIS F7306, JIS F7354
Test	JIS F7400

APPLICATIONS

- Aboard ships
- Marine hot and cold water systems
- Marine oil systems
- Marine steam systems



MATERIALS

body	grey cast iron, ductile cast iron, cast carbon steel	seat	bronze, stainless steel
disc	grey cast iron, ductile cast iron, cast carbon steel	gasket	compressed fibre
bonnet	grey cast iron, ductile cast iron, cast carbon steel	packing	graphite
stem	brass/nickel bronze, stainless steel	handwheel	grey cast iron

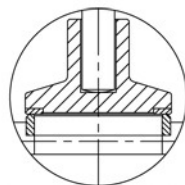
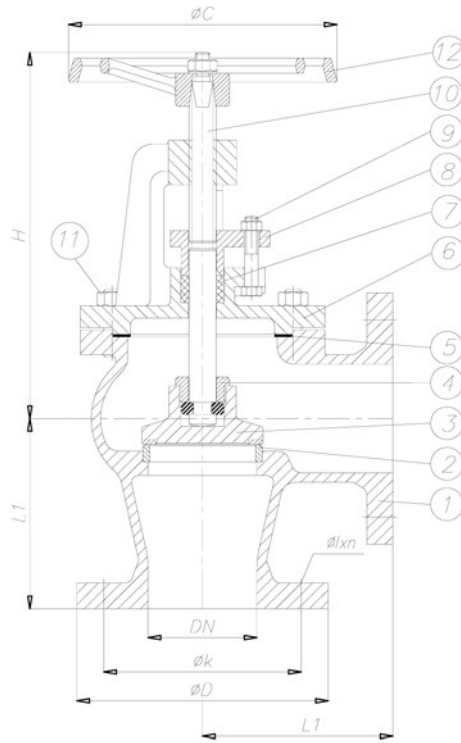
FEATURES

- Angle pattern globe valve body configuration
- Available as STOP (JIS F7306) or Screw Down Non Return / SDNR (JIS F7354) variant
- Graphite packing for gland seal
- Klingerite bonnet gasket
- Multiple body material options: grey cast iron, ductile cast iron, and cast carbon steel

JIS VALVE

JIS 5K Angle Globe Valve

SECTION Technical drawing REF EFC-138



Screw Down Non Return
(SDNR)

JIS VALVE

JIS 5K Angle Globe Valve

SECTION Dimensions per size REF EFC-138

SIZE	L	H	C	D	K	OXN	WEIGHT
DN50	100	230	160	130	105	Ø15x4	9.5 kg
DN65	115	270	180	155	130	Ø15x4	13 kg
DN80	130	280	200	180	145	Ø19x4	19.3 kg
DN100	150	305	220	200	165	Ø19x8	23.5 kg
DN125	170	355	250	235	200	Ø19x8	—
DN150	190	390	300	265	230	Ø19x8	—
DN200	220	485	400	320	280	Ø23x8	—
DN250	275	540	400	385	345	Ø23x12	—
DN300	310	610	500	430	390	Ø23x12	—
DN350	360	690	500	480	435	Ø25x12	—
DN400	395	770	630	540	495	Ø25x16	—

All dimensions in millimetres unless stated otherwise. Values are nominal; tolerances confirmed at quote.