

JIS VALVE

JIS 16K Straight Globe Valve

REF **EFC-133** ISSUED 05 Jun 2026

SPECIFICATIONS

Size	DN15–DN40
Pressure	16K
End connection	flanged (JIS B2240)
Temperature	null°C to 205°C
Media	air, gas, oil, pulsation water, steam, water

ACTUATION

- manual handwheel — GG 25 handwheel

STANDARDS

Design	JIS F7303, JIS F7409 SDNR
Test	JIS F7400

APPLICATIONS

- marine
- steam systems
- water systems
- air systems
- gas systems
- oil systems



MATERIALS

body	bronze	bonnet	bronze
disc	brass/bronze	stem	brass
handwheel	grey cast iron	packing	graphite

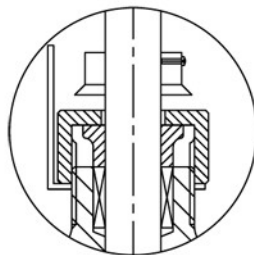
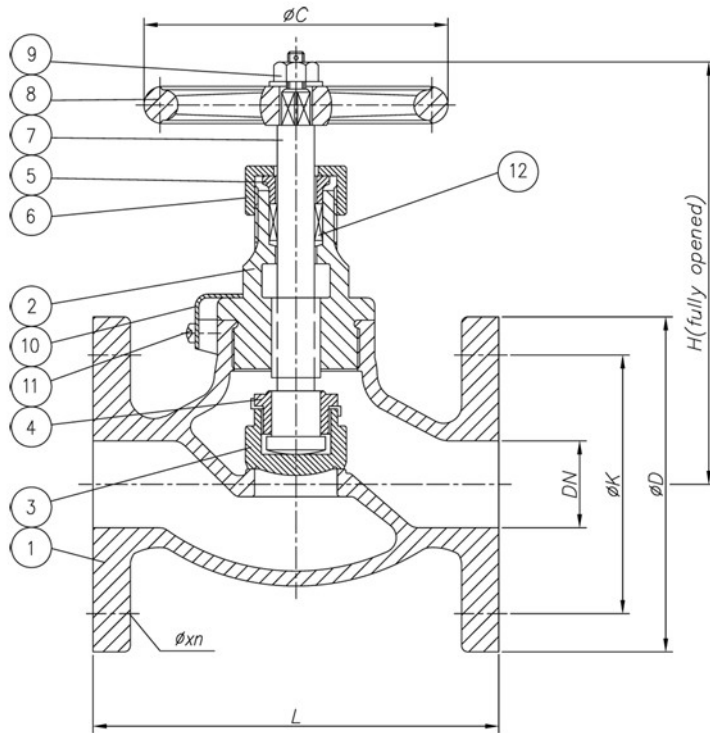
FEATURES

- Straight globe pattern
- Available as STOP valve (JIS F7303) and Screw Down Non Return variant (JIS F7409 SDNR)
- Position indicator
- Graphite packing
- Flanged ends to JIS B2240 16K

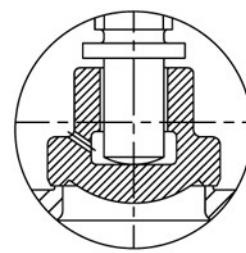
JIS VALVE

JIS 16K Straight Globe Valve

SECTION Technical drawing REF EFC-133



Indicator



Screw Down Non Return (SDNR)

JIS VALVE

JIS 16K Straight Globe Valve

SECTION Dimensions per size REF EFC-133

SIZE	L	H	C	D	K	WEIGHT
DN15	110	130	80	95	70	2.76 kg
DN20	120	140	100	100	75	3.72 kg
DN25	130	160	125	125	90	5.2 kg
DN32	160	170	125	135	100	6.91 kg
DN40	180	190	140	140	105	8.43 kg

All dimensions in millimetres unless stated otherwise. Values are nominal; tolerances confirmed at quote.